

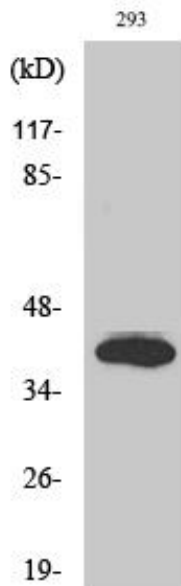


Islet-2 Polyclonal Antibody

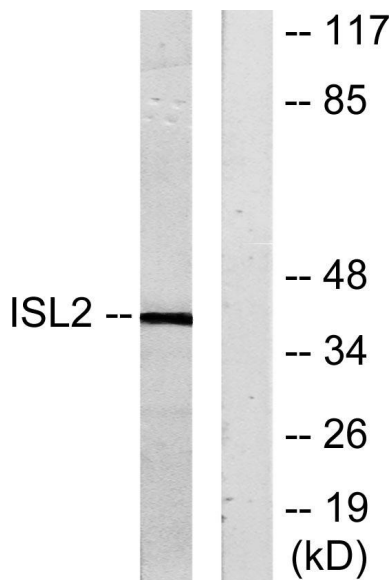
Catalog No	YP-Ab-01829
Isotype	IgG
Reactivity	Human;Mouse;Rat
Applications	WB;IHC
Gene Name	ISL2
Protein Name	Insulin gene enhancer protein ISL-2
Immunogen	The antiserum was produced against synthesized peptide derived from human ISL2. AA range:161-210
Specificity	Islet-2 Polyclonal Antibody detects endogenous levels of Islet-2 protein.
Formulation	Liquid in PBS containing 50% glycerol, 0.5% BSA and 0.02% sodium azide.
Source	Polyclonal, Rabbit,IgG
Purification	The antibody was affinity-purified from rabbit antiserum by affinity-chromatography using epitope-specific immunogen.
Dilution	WB 1:500-2000;IHC-p 1:50-300
Concentration	1 mg/ml
Purity	≥90%
Storage Stability	-20°C/1 year
Synonyms	ISL2; Insulin gene enhancer protein ISL-2; Islet-2
Observed Band	40kD
Cell Pathway	Nucleus .
Tissue Specificity	Epithelium, Eye,
Function	function:Transcriptional factor that defines subclasses of motoneurons that segregate into columns in the spinal cord and select distinct axon pathways.,similarity:Contains 1 homeobox DNA-binding domain.,similarity:Contains 2 LIM zinc-binding domains.,
Background	function:Transcriptional factor that defines subclasses of motoneurons that segregate into columns in the spinal cord and select distinct axon pathways.,similarity:Contains 1 homeobox DNA-binding domain.,similarity:Contains 2 LIM zinc-binding domains.,
matters needing attention	Avoid repeated freezing and thawing!
Usage suggestions	This product can be used in immunological reaction related experiments. For more information, please consult technical personnel.



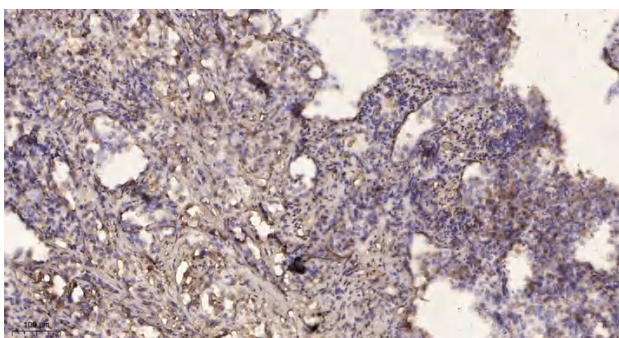
Products Images



Western Blot analysis of various cells using Islet-2 Polyclonal Antibody diluted at 1:500 cells nucleus extracted by Minute TM Cytoplasmic and Nuclear Fractionation kit (SC-003, Inventbiotech, MN, USA).



Western blot analysis of lysates from 293 cells, using ISL2 Antibody. The lane on the right is blocked with the synthesized peptide.



Immunohistochemical analysis of paraffin-embedded human lung cancer. 1, Antibody was diluted at 1:200(4° overnight). 2, Tris-EDTA, pH9.0 was used for antigen retrieval. 3, Secondary antibody was diluted at 1:200(room temperature, 45min).